

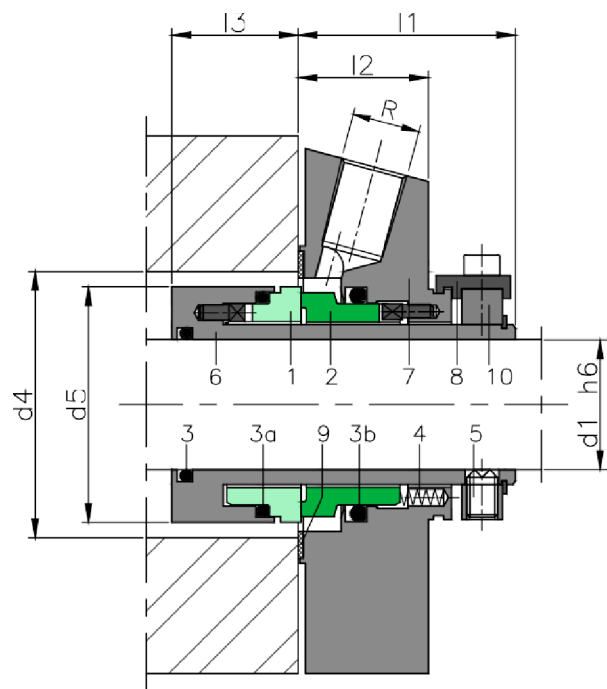
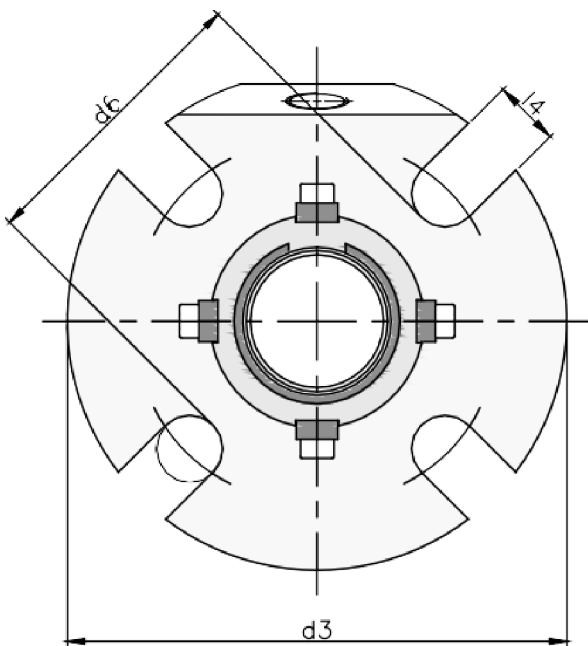


## CHARACTERISTICS

- Balanced.
- Multispring.
- Not dependent on the rotation direction.
- Flushing connections.

## SECTOR

- Pharmaceutical industry
- Power plant technology
- Pulp and paper industry
- Water and waste water technology
- Mining industry
- Food and beverage industry
- Sugar industry
- Contaminated, abrasive and solids containing media
- Thick juice (70 ... 75 % sugar content)
- Raw sludge, sewage slurries
- Raw sludge pumps
- Thick juice pumps
- Conveying and bottling of dairy products



## OPERATING RANGE

$d_1 = 25 \div 110\text{mm}$ ,  $p = 25 \text{ kg/cm}^2$ ,  $v = 16 \text{ m/s}$ ,  $t = -15 \div +200\text{oC}$  (\*)

(\*) The temperature resistance depends on the material of the secondary seals used.

The operating limits are defined by the PV factor which is determined for the sealing system characteristics and those of the application.

## ADVANTAGE

- Ideal seal for standardizations
- Universal applicable for packings conversions, retrofits or original equipment
- No dimensional modification of the seal chamber (centrifugal pumps) necessary, small radial installation height
- No damage of the shaft by dynamically loaded O-Ring
- Extended service life
- Installation faults are avoided, cost-effective
- No damage caused by dirt entered during assembly
- Straightforward and easy installation due to pre-assembled unit (reduced down-times)
- Individual adaptation to pump design possible
- Customer specific versions available

## COMPONENTS

- 1 Rotating contact surface
- 2 Stationary contact surface
- 3 O-rings
- 4 Springs
- 5 Set screws
- 6 Sleeve
- 7 Flange
- 8 Setting clips
- 9 Flat gasket
- 10 Drive ring
- 11 Lip seal quench
- 12 Throttle ring PTFE carbongraphite reinforced quench

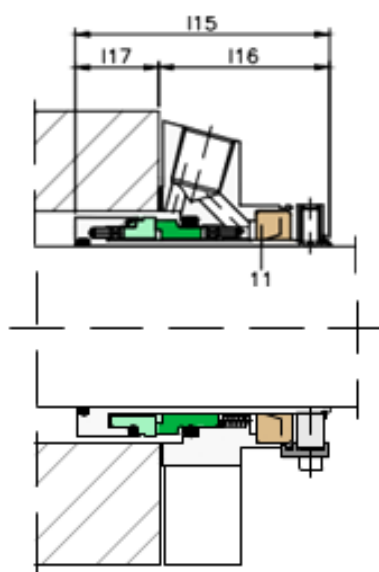
## DESCRIPTION

A single cartridge with connections for flushing the seal contact faces. The springs are protected from the product to prevent blocking in applications with particleladen fluids. The standard flange has a connection for flushing to clean and cool the faces (**ETAX**)

## DIMENSIONS IN CHART

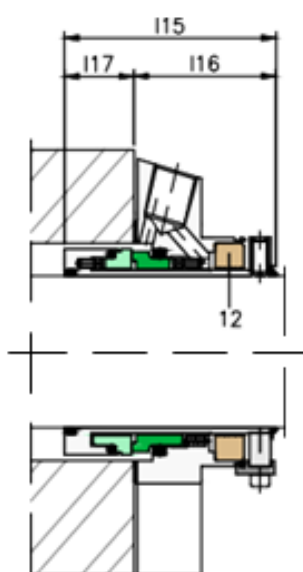
Shaft															
mm	I1	I2	I3	I4	I12	I13	I14	I15	I16	I17	d3	d4 mín.	d4 máx.	d5	d6
25	42,4	25,4	24,6	13,2	35	32	17,5	79,5	53,4	26,1	105	44	51,5	43	62
28	42,4	25,4	24,6	13,2	35	32	17,5	79,5	53,4	26,1	105	47	52	46	62
30	42,4	25,4	24,6	13,2	35	32	17,5	79,5	53,4	26,1	110	49	56	48	65
32	42,4	25,4	24,6	13,2	35	32	17,5	79,5	53,4	26,1	110	51	57	49,8	67
33	42,4	25,4	24,6	13,2	35	32	17,5	79,5	53,4	26,1	113	51	57	49,8	67
35	42,4	25,4	24,6	13,2	35	32	17,5	79,5	53,4	26,1	123	54	61,5	53	70
38	42,4	25,4	24,6	14,2	35	32	17,5	79,5	53,4	26,1	123	57	66	56	75
40	42,4	25,4	24,6	14,2	35	32	17,5	79,5	53,4	26,1	133	59	68	58	75
42	42,4	25,4	24,6	14,2	35	32	17,5	79,5	53,4	26,1	133	61,5	69,5	60,5	80
43	42,4	25,4	24,6	14,2	35	32	17,5	79,5	53,4	26,1	138	61,5	70,5	60,5	80
45	42,4	25,4	24,6	14,2	35	32	17,5	79,5	53,4	26,1	138	64	73	62,5	81
48	42,4	25,4	24,6	14,2	35	32	17,5	79,5	53,4	26,1	138	67	75	65,6	84
50	42,4	25,4	24,6	18	35	32	17,5	79,5	53,4	26,1	148	69	78	68	87
53	42,4	25,4	24,6	18	35	32	17,5	79,5	53,4	26,1	148	73	87	72	97
55	42,4	25,4	24,6	18	35	32	17,5	79,5	53,4	26,1	148	74	83	73	90
60	42,4	25,4	24,6	18	35	32	17,5	79,5	53,4	26,1	157	79	91	78	102
65	42,4	25,4	24,6	18	35	32	17,5	79,5	53,4	26,1	163	85,7	98,5	84,8	109
70	42,4	25,4	24,6	18	35	32	17,5	79,5	53,4	26,1	178	95	108	93	118
75	57,4	28	26,6	18	46,1	37,9	22	98	63,9	34,1	190	101,6	118	100	129
80	57,4	28	26,6	18	46,1	37,9	22	98	63,9	34,1	195	108	124	106,4	135
85	57,4	28	26,6	22	46,1	37,9	22	98	63,9	34,1	198	111,1	128	109,5	139
90	57,4	28	26,6	22	46,1	37,9	22	98	63,9	34,1	205	117,5	135	115,9	145
95	57,4	28	26,6	22	46,1	37,9	22	98	63,9	34,1	208	120,7	138	119,1	148
100	57,4	28	26,6	22	46,1	37,9	22	98	63,9	34,1	218	127	144	125,4	154

Dimensions subject to changes or modifications.



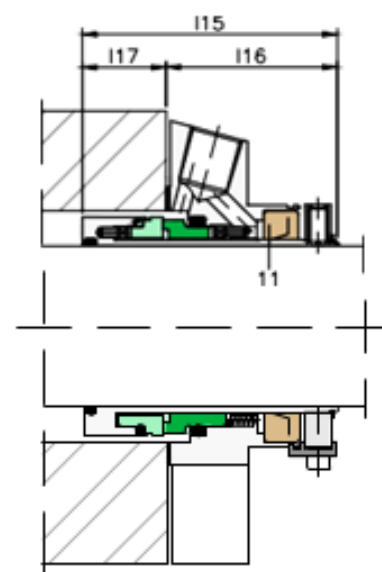
**ETAX - QF**

Single cartridge with connections for quench and flush between the faces, with a non-pressurised fluid. The quench fluid sealing is done through an oil seal. For applications using fluids with scant lubrication.



**ETAX - QFG**

Single cartridge with connections for quench and flush between the faces, with a non-pressurised fluid. The quench fluid sealing is done through a throttle ring PTFE carbon-graphite reinforced.



**ETAX - QFC**

Single cartridge with no connections, for closed chamber applications in which no water re-circulation is necessary. Applications: Clean fluids