

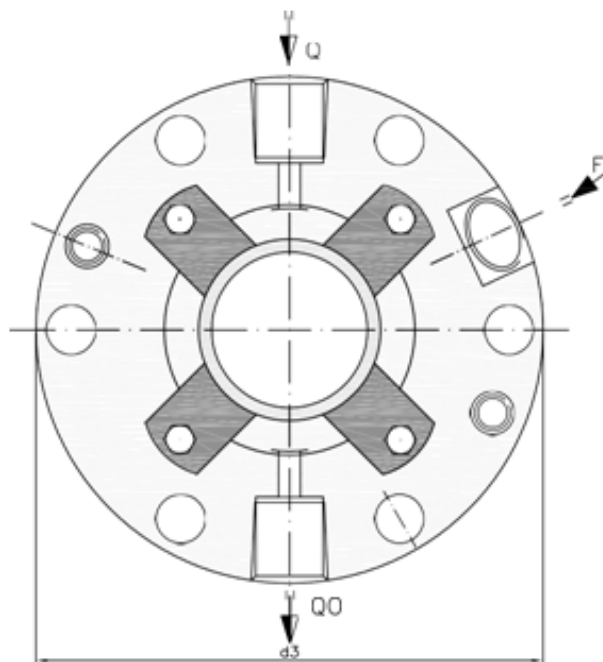


CHARACTERISTICS

- Balanced.
- Multispring.
- Not dependent on the rotation direction.
- Flush and drain connections.
- API 682 / ISO 21049.
- Categories 2 and 3, Type A, Arrangement 1.

SECTOR

- Pharmaceutical industry
- Power plant technology
- Pulp and paper industry
- Water and waste water technology
- Mining industry
- Food and beverage industry
- Sugar industry
- Contaminated, abrasive and solids containing media
- Thick juice (70 ... 75 % sugar content)
- Raw sludge, sewage slurries
- Raw sludge pumps
- Thick juice pumps
- Conveying and bottling of dairy products



OPERATING RANGE

$d_1 = 19.5 \div 110\text{mm}$, $p = 40 \text{ kg/cm}^2$, $v = 23 \text{ m/s}$, $t = -40 \div +200^\circ\text{C}$ (*)

(*) The temperature resistance depends on the material of the secondary seals used. The operating limits are defined by the PV factor which is determined for the sealing system characteristics and those of the application.

DESCRIPTION

Simple cartridge with connections for washing between the friction faces and the Quench system with unpressurized fluid for cooling. For applications where high pressure is required.

The special characteristics of the cartridge provide great robustness and reliability.

Its design allows axial movement of up to $\pm 2.0 \text{ mm}$, depending on the diameter and mounting.

SEAL FACE MATERIALS.

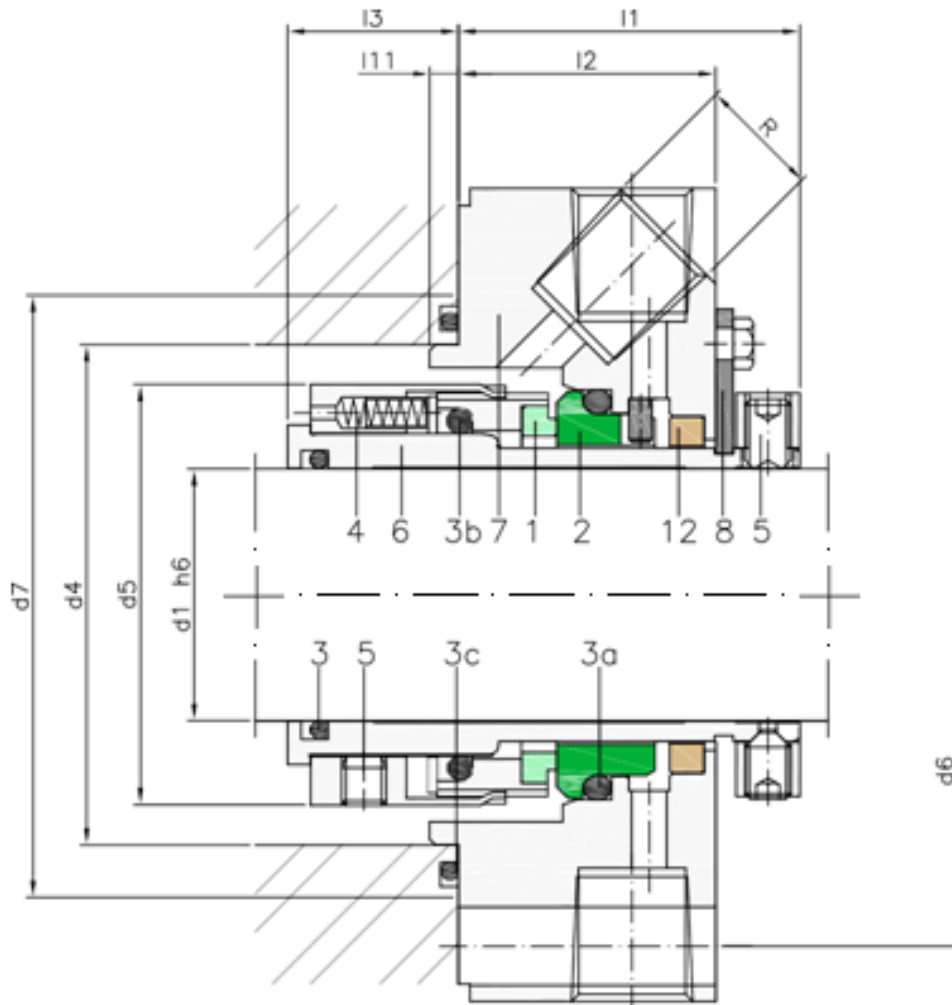
Antimony impregnated carbon graphite
 Resin impregnated carbon graphite
 Sintered silicon carbide
 Reaction bonded silicon carbide
 Tungsten carbide

FEATURES

- For unstepped shafts
- Single seal
- Balanced
- Independent of direction of rotation
- Encapsulated rotating spring

ADVANTAGE

- Especially designed for solids containing and highly viscous media
- Springs are protected from the product
- Rugged and reliable design
- No damage of the shaft by dynamically loaded O-Ring
- Universal application
- Variant for operation under vacuum available
- Variant for sterile operation available



COMPONENTS

- 1 Rotating contact surface
- 2 Stationary contact surface
- 3 O-ring
- 4 Springs
- 5 Drive ring
- 6 Sleeve
- 7 Flange
- 8 Setting clips
- 12 PTFE ring for quench.

DIMENSIONS IN CHART

OMP									
	d3	d4	d5	d6	d7	l1	l2	l3	l11
20	138,0	70,0	50,0	105,0	85,0	94,0	76,0	1,0	6,0
30	148	80	62	115	95	98	77	2,5	6
40	158,0	90,0	72,0	125,0	105,0	98,5	77,5	7,0	6,0
50	168	100	86	140	115	99.5	78.5	12	6
60	188,0	120,0	99,0	160,0	135,0	102,0	81,0	18,5	6,0
70	198	130	109	170	145	106	81	18	6
80	208,0	140,0	119,0	180,0	155,0	106,0	81,0	23,0	6,0
90	238	160	129	205	175	106	81	23	6
100	248,0	170,0	153,0	215,0	185,0	109,0	81,0	24,0	6,0
110	258	180	168	225	195	109	81	24	6

Dimensions subject to changes or modifications.