

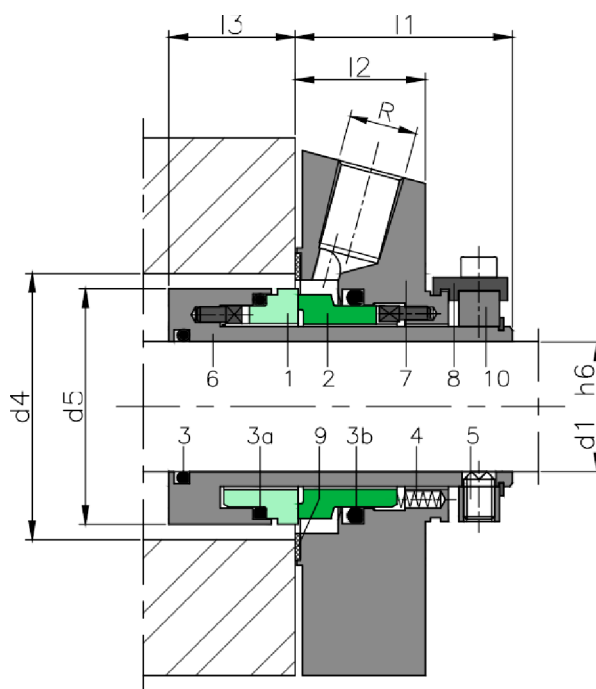
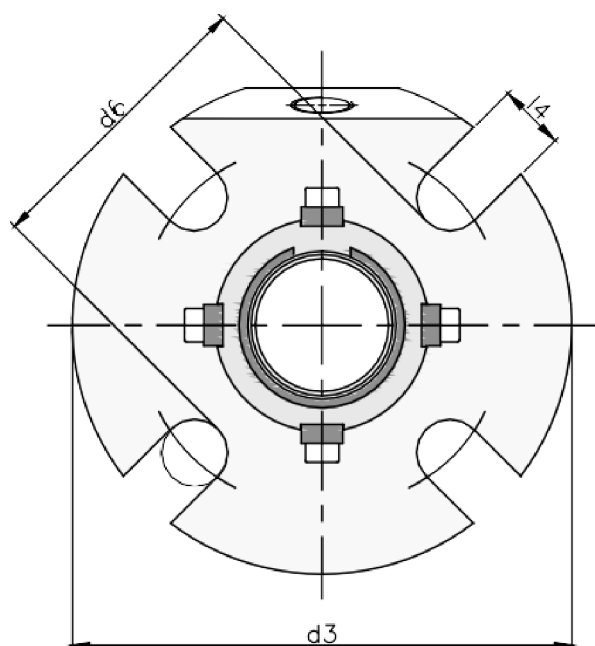


CHARACTERISTICS

- Balanced.
- Multispring.
- Not dependent on the rotation direction.
- Flushing connections.

SECTOR

- Pharmaceutical industry
- Power plant technology
- Pulp and paper industry
- Water and waste water technology
- Mining industry
- Food and beverage industry
- Sugar industry
- Contaminated, abrasive and solids containing media
- Thick juice (70 ... 75 % sugar content)
- Raw sludge, sewage slurries
- Raw sludge pumps
- Thick juice pumps
- Conveying and bottling of dairy products



OPERATING RANGE

$d_1 = 25 \div 110\text{mm}$, $p = 25 \text{ kg/cm}^2$, $v = 16 \text{ m/s}$, $t = -15 \div +200\text{°C}$ (*)

(*) The temperature resistance depends on the material of the secondary seals used.

The operating limits are defined by the PV factor which is determined for the sealing system characteristics and those of the application.

ADVANTAGE

- Ideal for use in ANSI process pumps
- Universal applicable for packings conversions, retrofits or original equipment
- Seal for standardizations
- No dimensional modification of the seal chamber necessary, small radial installation height
- No damage of the shaft by dynamically loaded O-Ring
- Extended service life
- Installation faults are avoided, cost-effective
- No damage caused by dirt entered during assembly
- Straightforward and easy installation due to pre-assembled unit (reduced down-times)

COMPONENTS

- 1 Rotating contact surface
- 2 Stationary contact surface
- 3 O-rings
- 4 Springs
- 5 Set screws
- 6 Sleeve
- 7 Flange
- 8 Setting clips
- 9 Flat gasket
- 10 Drive ring
- 11 Lip seal quench
- 12 Throttle ring PTFE carbongraphite reinforced quench

DESCRIPTION

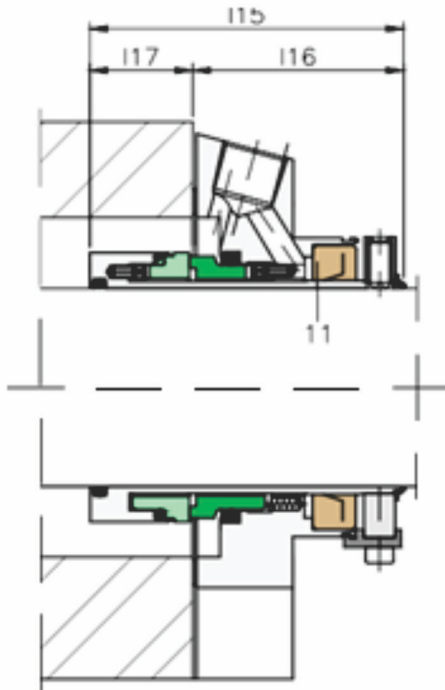
A single cartridge with connections for flushing the seal contact faces. The springs are protected from the product to prevent blocking in applications with particleladen fluids. The standard flange has a connection for flushing to clean and cool the faces.

Recommended for flange pumps ANSI Standard bore and ansi big bore

DIMENSIONS IN CHART

Shaft													
(")	mm	d3	d4 min.	d4 max.	d5	d6	l1	l2	l3	l4	l15	l16	l17
1,000	25,4	--	--	--	--	--	--	--	--	--	--	--	--
1,125	28,5	114,3	44,5	71	43,5	84,1	42,3	25,4	24,6	11,1	74,6	48,4	26,1
1,250	31,7	--	--	--	--	--	--	--	--	--	--	--	--
1,375	35	130	50,8	81	49,7	90	42,3	25,4	24,6	11,1	74,8	48,7	26,1
1,500	38,1	--	--	--	--	--	--	--	--	--	--	--	--
1,625	41,2	--	--	--	--	--	--	--	--	--	--	--	--
1,750	44,4	165	63,5	103	62,5	116	42,3	25,4	24,6	14,2	76,5	50,3	26,1
1,875	47,6	152	67,5	100	65,6	112	42,3	25,4	24,6	14	78	52,3	25,7
2,000	50,8	160	70	116	68	124	42,3	32	18	14	79,5	53,3	26,1
2,125	54	175	74	115	72	134	42,3	25,4	24,6	18	76,5	50,3	26,1
2,250	57,1	163	78,5	112	75,1	119	48,7	32,4	17,6	18	79,5	53,8	26,1
2,500	63,5	198	83,7	134	81,5	140	48,7	31,7	18,2	18	79,5	53,8	26,1
2,625	66,6	175	80,5	130	84,7	136	48,7	31,7	18,2	18	79,5	53,8	26,1
2,750	69,8	190	95	133	93	140	49,4	32,4	17,6	16	79,5	53,8	26,1
3,000	76,2	209	102	140	100	150	57,8	32,4	26,1	16,5	98	64	34,1
3,250	82,5	--	--	--	--	--	--	--	--	--	--	--	--

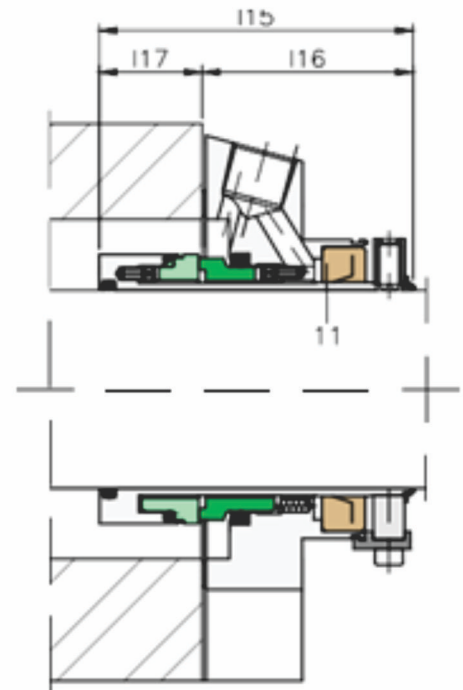
Dimensions subject to changes or modifications.



ETAX - ANSI BIG BORE
ETAX - ANSI STANDARD BORE

Single cartridge with connections for quench and flush between the faces, with a non-pressurised fluid. The quench fluid sealing is done through a lip seal.

For applications using fluids with scant lubrication.



QF - ANSI BIG BORE
QF - ANSI STANDARD BORE

Single cartridge with connections for quench and flush between the faces, with a non-pressurised fluid. The quench fluid sealing is done through a throttle ring PTFE carbon-graphite reinforced.

For applications using fluids with scant lubrication.