



INDUSTRIAL PUMP CATALOGUE

WE ARE ETANNOR ENGINEERS

ETANNOR Pump manufacture and design of all type industrial applications pumps and has emerged as leader in creating total pumping solutions for Ceramic Industries, Sugar Plants, Food Industries, Automobile Industries, Textile Industries, Paper Mills and many more industries and application.

We have sound infrastructures with all modern facilities and all the basics to meet the requirement of the different segments and thus to cater each and every customers. We are recognized for its strong management for the dynamics to meet the changes in the growing and competitive environment. Moreover it is flexible to adapt the policies and frame the regulations as per industry standard.

INDUSTRIES WE SERVED

Over the past decade that we have been serving our clients, we have to build a strong clientele across 5+ countries and across 10+ industries verticals. We have been projecting stellar performance in delivering some of the par excellence and cutting edge industrial pumps solution to our clients.

OUR WIDE RANGE OF INDUSTRIES PUMP

We deliver top-notch industrial pumps for chemical, pharmaceutical, paper and pulp, food processing, thermic fluid, plywood and other industries.

ACCESSIBILITY

Contact us using traditional methods or new communication technologies. We are always ready to provide you with the most suitable response.

AVAILABILITY

Our wide range and efficient process make it possible to deliver the requested products when it is required.

ADAPTIBILITY

We provide our customers with advice and guidance. Our design and manufacturing capacity means we are able to customize products and services to their needs

OUR VALUES

We provide our customers with advice and guidance. Our design and manufacturing capacity means we are able to customize products and services to their needs

RELIABILITY

Our customers see us as a trusted partner because we always meet our commitments.

SECTORS

We contribute to the success of strategic sectors.





RANGE

Delivery size : up to 150 mm

Capacity : up to 550 m³/hr

Head : up to 100 metres

Temperature : -10°C to 100°C.

APPLICATION

Power plant, Fire Fighting, Mining Industries, Petrochemical Industries, Chemical Industries, Water Treatment Plant, Pharmaceutical Plant, Mine water, Lift irrigation, Sprinkler systems, Fire fighting, Booster services, Pumping brines, Oils etc.

FEATURES

These are single stage, single suction, horizontal shaft type. They are made in accordance with DIN 24255. Models are available to operate at 1450 rpm and 2900 rpm at 50 Hz

Casing :

End suction, volute type with top centre line discharge. Suction and discharge nozzles as well as the supporting feet are cast integral with the casing.

Impeller :

Enclosed type dynamically balanced. Hydraulic balance is achieved either by back vanes for smaller impellers and by balancing hole with back wear rings for large impellers.

Shaft :

Three driving units cover complete range. The high tensile steel shaft accurately machined and ground is supported by anti-friction bearings. The shaft is protected by shaft sleeve from wear in stuffing box area.

Stuffing Box :

The stuffing box can be sealed by gland packing or by mechanical seal.

Bearing :

Deep groove ball bearings are provided. Standard lubrication is grease. Oil lubrication against requirement.

Direction of Rotation :

Clockwise viewed from driving end.

Drive :

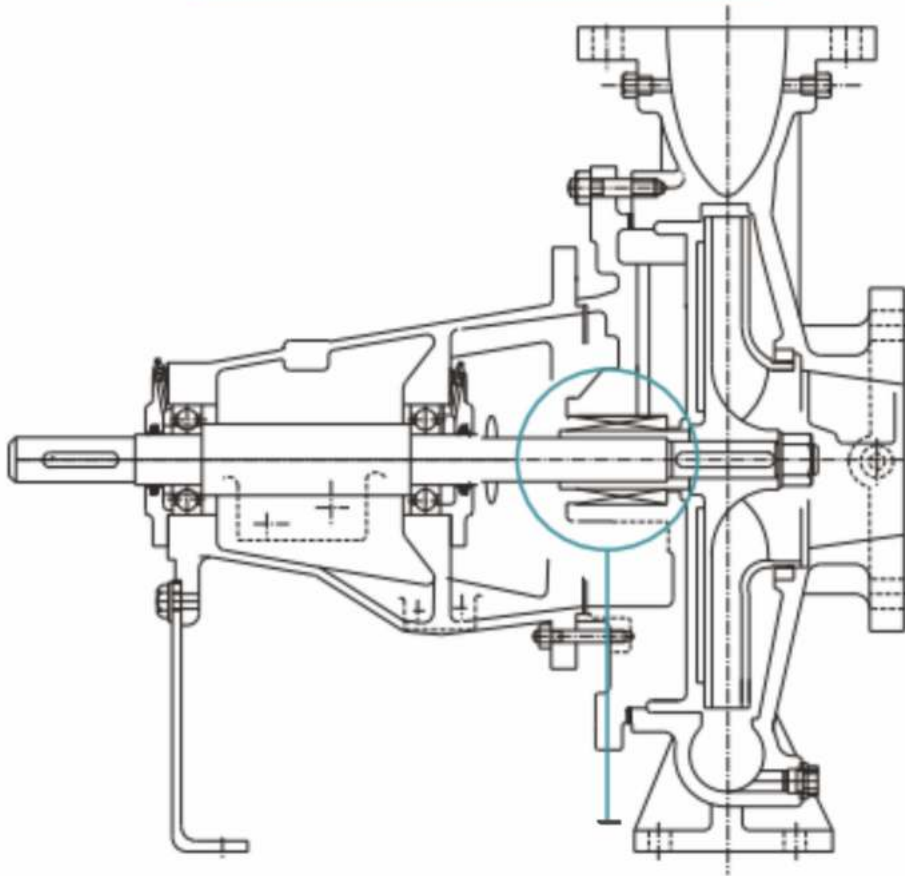
Suitable for coupling with electric motors, engines directly or through belt drives.

Flanges :

Standard : Drilling as per BS EN 1092-2 (DIN 2533 ND 16)

Optional : Drilling as per IS/BS/ASA/DIN available with suitable pressure rating.

TYPICAL CROSS SECTIONAL DRAWING



DESCRIPTION

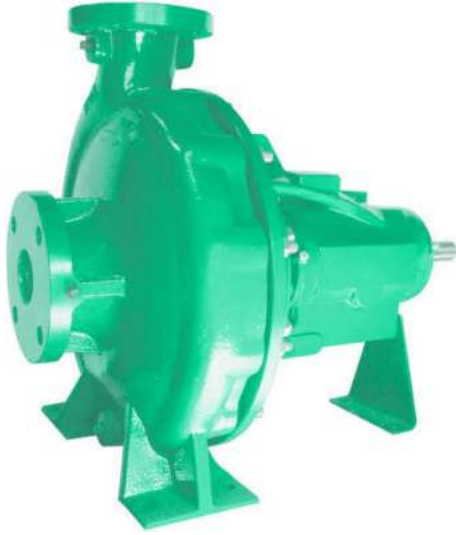
ETANNOR Engineers provides the best range of Centrifugal Process Pumps famous with EBD – Series in a market.

Our specially designed Centrifugal Process Pump is the most preferred hydraulic pump for industrial and domestic uses. It is used to move or raise the pressure of a liquid. High-quality impeller which is used in our centrifugal pump rotates the liquid and the centrifugal force which is generated in the pump push the liquid to move out. The impeller is the device which rotates and transfer energy to the fluid.

We fabricate the centrifugal pump that includes the end-suction and back-pullout type centrifugal pump. Our heavy duty pump is capable to handle a wide spectrum of corrosive chemicals, starting from strongly oxidizing solutions to strongly reducing ones, at different temperatures and concentration, which can be used in different process plants.

MATERIAL

Casing	Cast Iron / Bronze/ Phosphor Bronze
Casing Cover	Cast Iron / Bronze/ Phosphor Bronze
Impeller	Cast Iron / Bronze/ Phosphor Bronze
Wear Ring	Cast Iron / Bronze
Shaft	Carbon Steel /Stainless Steel
Shaft Sleeve	Stainless Steel / Bronze
Lantern Ring	Nylon
Gland	Cast Iron / Bronze



RANGE

Delivery size up to 125 mm

Capacity up to 660 m³ /hr

Head up to 100 m

Temperature up to (-) 10 °C to 140 °C

APPLICATION

Power plant, Air Condition, Fire Fighting, Mining Industries, Petrochemical Industries Chemical Industries, Water Treatment Plant, Pharmaceutical Plant, Mine water, Lift irrigation, Sprinkler systems, Fire fighting, Booster services, Pumping brines, Oils etc.

FEATURES

These are single stage, single suction, horizontal shaft type. They are made in accordance with DIN 24255. Models are available to operate at 1450 rpm and 2900 rpm at 50 Hz

Casing :

End suction, volute type with top centre line discharge. Suction and discharge nozzles as well as the supporting feet are cast integral with the casing.

Impeller :

Enclosed type dynamically balanced. Hydraulic balance is achieved either by back vanes for smaller impellers and by balancing hole with back wear rings for large impellers.

Shaft :

Three driving units cover complete range. The high tensile steel shaft accurately machined and ground is supported by anti-friction bearings. The shaft is protected by shaft sleeve from wear in stuffing box area.

Stuffing Box :

The stuffing box can be sealed by gland packing or by mechanical seal.

Bearing :

Deep groove ball bearings are provided. Standard lubrication is grease. Oil lubrication against requirement.

Direction of Rotation :

Clockwise viewed from driving end.

Drive :

Suitable for coupling with electric motors, engines directly or through belt drives.

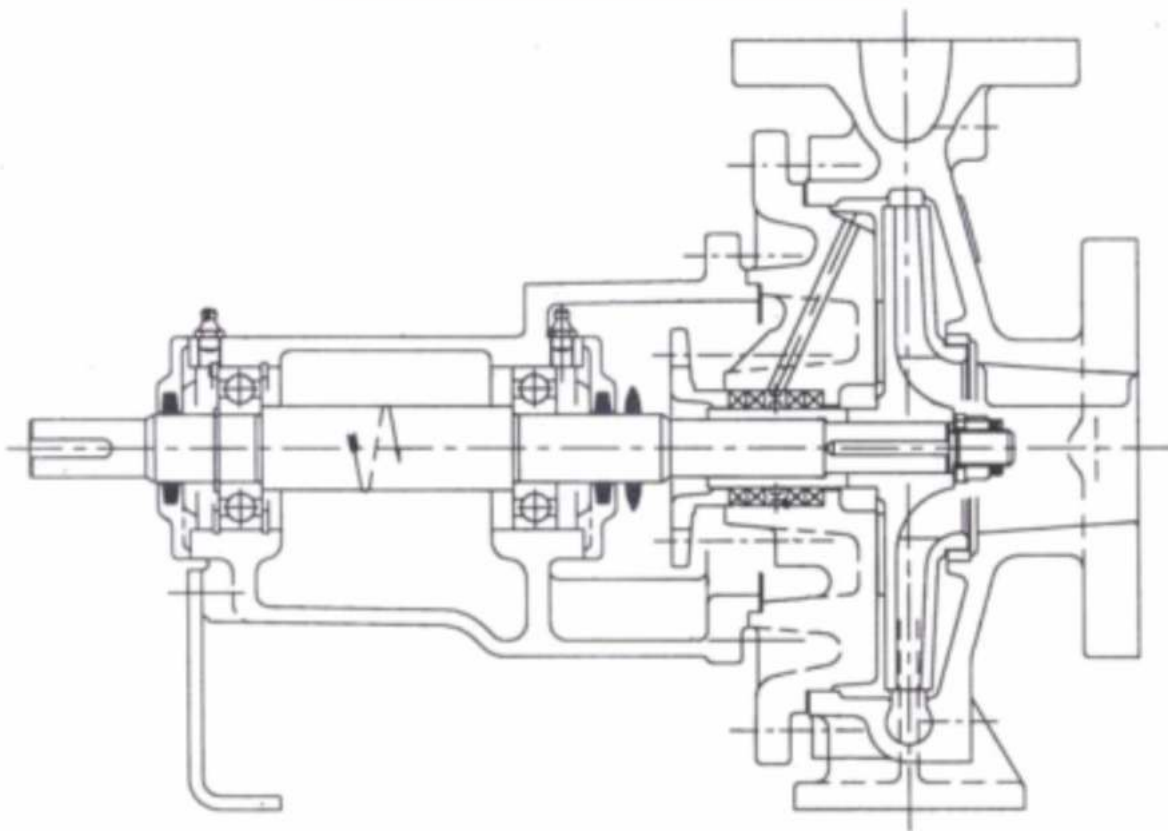
Flanges :

Standard : Drilling as per BS EN 1092-2 (DIN 2533 ND 16)

Optional : Drilling as per IS/BS/ASA/DIN available with suitable pressure rating.



TYPICAL CROSS SECTIONAL DRAWING



DESCRIPTION

ETANNOR Engineers provides the best range of Centrifugal Process Pumps famous with EEC – Series in a market.

Our specially designed Centrifugal Process Pump is the most preferred hydraulic pump for industrial and domestic uses. It is used to move or raise the pressure of a liquid. High-quality impeller which is used in our centrifugal pump rotates the liquid and the centrifugal force which is generated in the pump push the liquid to move out. The impeller is the device which rotates and transfer energy to the fluid.

We fabricate the centrifugal pump that includes the end-suction and back-pullout type centrifugal pump. Our heavy duty pump is capable to handle a wide spectrum of corrosive chemicals, starting from strongly oxidizing solutions to strongly reducing ones, at different temperatures and concentration, which can be used in different process plants.

MATERIAL

Casing	Cast Iron / Bronze/ Phosphor Bronze
Casing Cover	Cast Iron / Bronze/ Phosphor Bronze
Impeller	Cast Iron / Bronze/ Phosphor Bronze
Wear Ring	Cast Iron / Bronze
Shaft	Carbon Steel /Stainless Steel
Shaft Sleeve	Stainless Steel / Bronze
Lantern Ring	Nylon
Gland	Cast Iron / Bronze



RANGE

Delivery size up to 200 mm

Capacity up to 2200 m³ /hr

Head up to 150 m

Temperature up to (-) 50 °C to 350 °C

APPLICATION

Chemical Process Industries, Petro Chemical, Nuclear, Refinery, Paper and Power Plants etc. Pumps suitable for handling Corrosive Acides, Alkalies, Salt Solutions, Caustics, Hydro Carbons, Oils, Thermic Fluids, Liquefied Gases, Condensates, Viscous Liquids etc

FEATURES

Pumps are as per DIN 24256 and ISO 2858 and generally conform to API 610 (7th Edition) The design is of back pull out type. Large variety of models are available to operate at 1450 rpm and 2900 rpm at 50Hz and 1750 and 3500 rpm at 60Hz.

Casing :

The casing has axial suction and top centre line delivery. Smooth hydraulic passages ensure high efficiency. Normal design is for foot mounted pumps. Centre line mounting for special applications are also available.

Impeller :

The impellers are of enclosed type and semi-open impellers can also be supplied. Hydraulic balancing of impellers is achieved either by back vanes or by balancing holes. The impellers are statically and dynamically balanced. Reliable fixing of the impeller on shaft is achieved by using helicoil insert under impeller nut. To improve NPSH performance, inducer can be supplied.

Shaft :

The shaft is supported by two antifriction bearings to take residual axial thrust and prevent axial float or radial run out. It is fully protected from the liquid handled by means of a shaft sleeve and PTFE gaskets between impeller nut, impeller hub and shaft sleeve.

Stuffing Box :

The stuffing box is sealed by gland packing or by mechanical seal, Conversion from gland packing to mechanical seal is achieved by changing some standardised parts. Remachining of stuffing box is not necessary. Stuffing box cooling is provided for operating temperature 105°C for gland packed and 140°C for mechanical seal fitted pumps.

Bearing :

The bearings are oil lubricated. For high temperature (above 180°) application, bearing oil cooling arrangement is provided. All pumps are provided with reinforced bearing arrangement as standard supply

Direction of Rotation :

Clockwise viewed from driving end.

Drive :

Suitable for coupling with electric motors, engines directly or through belt drives.

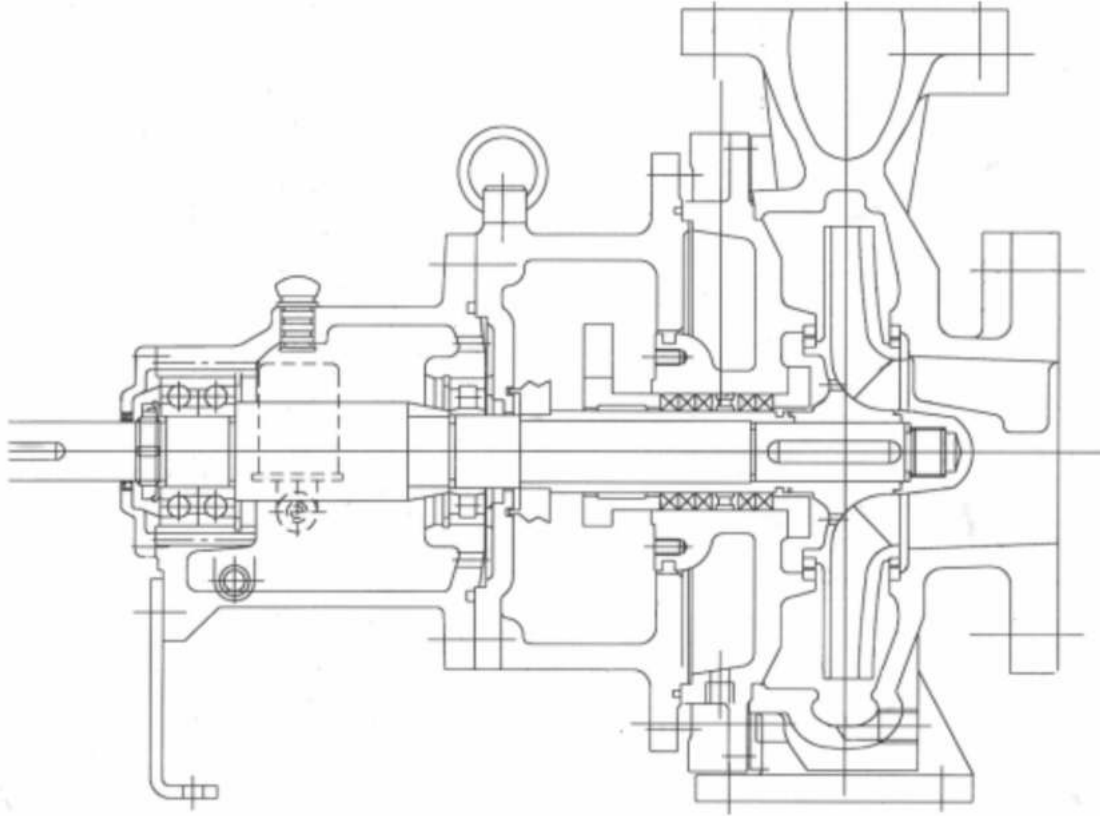
Flanges :

ANSI B 16.1, CL 125 Flat Face : for CI/BR

ANSI B 16.5, CL 150 Raised Face - for sp.metals Viz. st.steel, cast steel etc.

Drilling as per DIN, ASA, BS ect. (Optional)

TYPICAL CROSS SECTIONAL DRAWING



DESCRIPTION

ETANNOR Engineers provides the best range of Centrifugal Process Pumps famous with EKD – Series in a market.

Our specially designed Centrifugal Process Pump is the most preferred hydraulic pump for industrial and domestic uses. It is used to move or raise the pressure of a liquid. High-quality impeller which is used in our centrifugal pump rotates the liquid and the centrifugal force which is generated in the pump push the liquid to move out. The impeller is the device which rotates and transfer energy to the fluid.

We fabricate the centrifugal pump that includes the end-suction and back-pullout type centrifugal pump. Our heavy duty pump is capable to handle a wide spectrum of corrosive chemicals, starting from strongly oxidizing solutions to strongly reducing ones, at different temperatures and concentration, which can be used in different process plants.

MATERIAL

Casing	Cast Iron / Bronze/ Phosphor Bronze
Casing Cover	Cast Iron / Bronze/ Phosphor Bronze
Impeller	Cast Iron / Bronze/ Phosphor Bronze
Wear Ring	Cast Iron / Bronze
Shaft	Carbon Steel /Stainless Steel
Shaft Sleeve	Stainless Steel / Bronze
Lantern Ring	Nylon
Gland	Cast Iron / Bronze

LOBE PUMPS



SPECIFICATION

Weight : 30-40kg

Automatic Grade : Semi Automatic

Power : 1hp

Driven Type : Electric

Pressure : 10-20Bar

APPLICATION

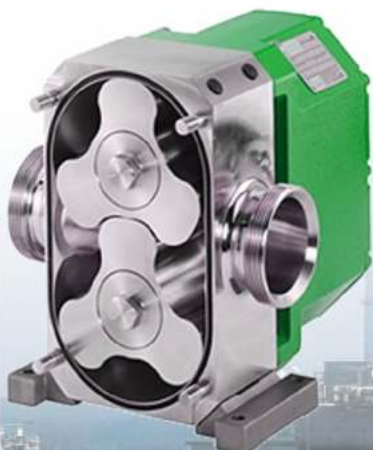
Product Butters, Flavourings, Frostings, Fruit Fillings, Fats & Oil, Sweeteners, Yeast Slurry. Beverage Products Beer, Wort, Yeast, Alcohol, Wines, Soft Drink, Fruit Concentrates & Fruit Drinks. Chemical Products Acetone, Adhesive, Alcohol, Alkyd Resins Ammonia, Amylacetate, Barium Sulphate, Benzene.

DETAILS:

- ▶ All Parts in contact with the product liquid are made form AISI-316 quality stainless steel alloys to meet exacting requirements of hygienic standard.
- ▶ As the rotors start to rotate, an expanding cavity is formed by rotation of the lobes which creates a vacuum at the inlet port, drawing liquid in pumping chamber.
- ▶ The product liquid is carried between the lobes and positively displaced, thereby sealing itself against the internal faces of the pump casing.
- ▶ The other lobe chamber is filed with the product liquid and about to commence it's discharge cycle.
- ▶ Finally the product liquid is forced or pressed out of discharge port of the pump in continuous smooth flow and pressure generated by the meshing of the lobe rotors.

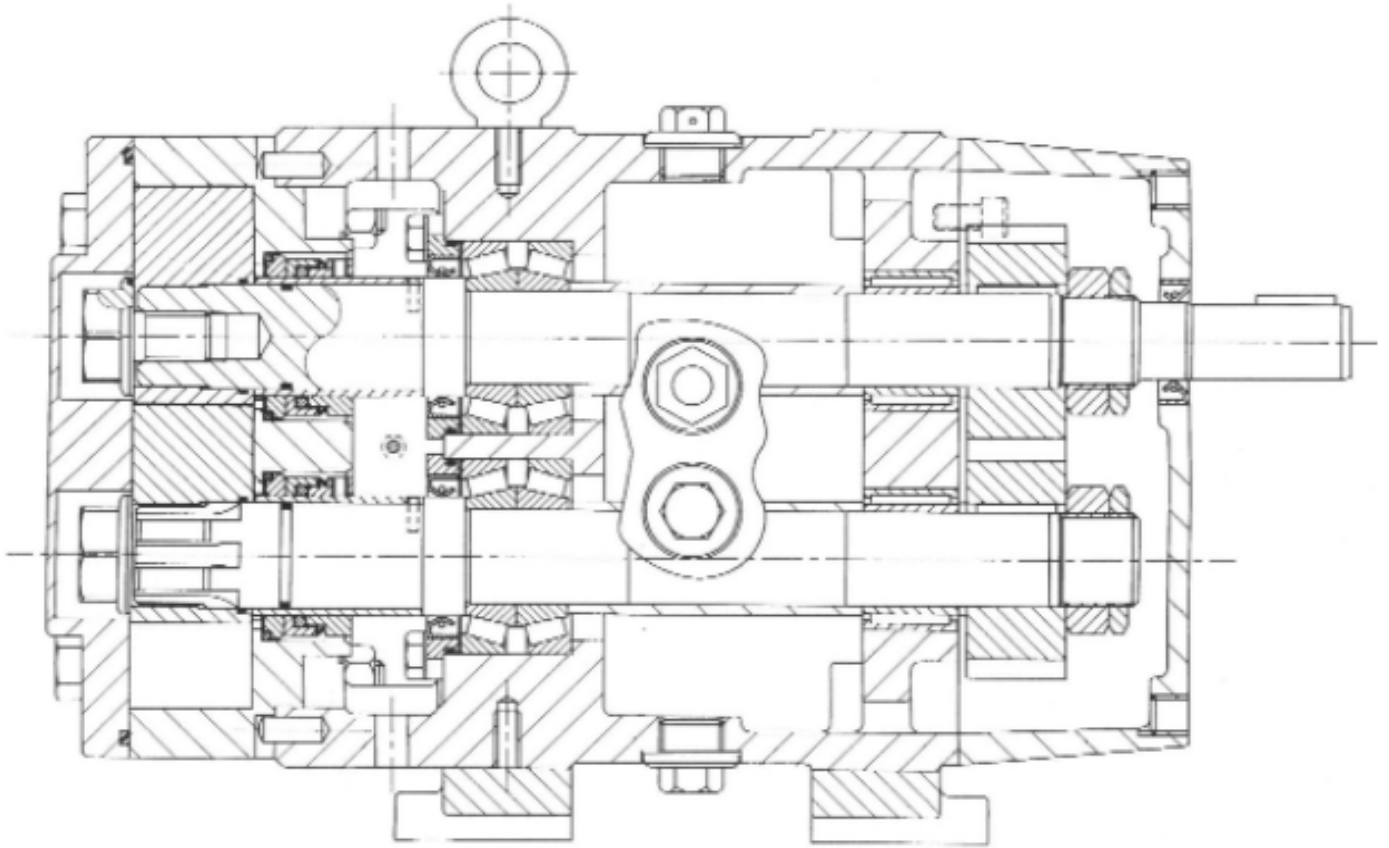
FULL RANGE PERFORMANCE DATA:

- ▶ Built - in - With relief Valve: This is also fully interchangeable. But the adjustable automatic spring loaded pressure relief valve provides a definite means of protection.
- ▶ Jacketed front cover: Jacketed rotor case front cover suitable for heating & cooling with any medium (Water, steam, oil etc. A built-in-relief valve cannot be used if this type of front cover is fitted.)



LOBE PUMPS

TYPICAL CROSS SECTIONAL DRAWING



DESCRIPTION

ETANNOR Engineers provides the best range of Lobe Pumps famous with LOBE – Series in a market.

Typical Products Efficiently Handled By S. S. Lobe Pumps Bakery Product Butters, Flavourings, Frostings, Fruit Fillings, Fats & Oil, Sweeteners, Yeast Slurry. Beverage Products Beer, Wort, Yeast, Alcohol, Wines, Soft Drink, Fruit Concentrates & Fruit Drinks. Chemical Products Acetone, Adhesive, Alcohol, Alkyd Resins Ammonia, Amylacetate, Barium Sulphate, Benzene. Canning Products Potato Salad, Baby Foods, Soups, Salad Dressing, Tomato Ketchup, Fruit Juice, Pumpkin Slurry, Cream Style Vegetable, Jams, Jellies and Mayonnaise. Confectionery Products Sugar Syrup, Cream Filling, Chocolate Mixture, Choco- Milk Cosmetic Products Face Cream and Lotion, Lipstick, Hair Dye, Essential Oil, Shampoo, Shaving Cream, Toothpaste. Dairy Products Butter, Butter Milk, Milk Cream, Milk Condensed, Margarine, Ice Cream, Milk Fruit, Yoghurt, Cheese Curd and Whey. Meat Products Meat Chunk, Sauce and Paste, Meat Ground, Pet Food. Pharmaceutical Products Antibiotics, Streptomycin, Cough Syrup, Health Tonic, Pil Paste, Syrups and Extract, Vitamin Malt Fish Oil, Emulsions.



SANITARY PUMPS

SPECIFICATION

SiC/SiC mechanical seal.

Gaskets: FPM and PTFE.

Jacketed pump housing.

Drain port.

Other connection types.

Motor with other voltages, frequencies, protection classes and efficiencies.

Trolley and/or control panel.

ATEX certification.

APPLICATION

The sanitary pump is a kind of classification of pumps in use, which involves the transportation of all products with human contacts, such as pharmaceutical, dairy, beverage, food, cosmetic, food additive, fine chemical and so on.

SALIENT FEATURES OF SANITARY CENTRIFUGAL PUMP

Noise & Vibration - free operation

Compact Design

Low operational maintenance

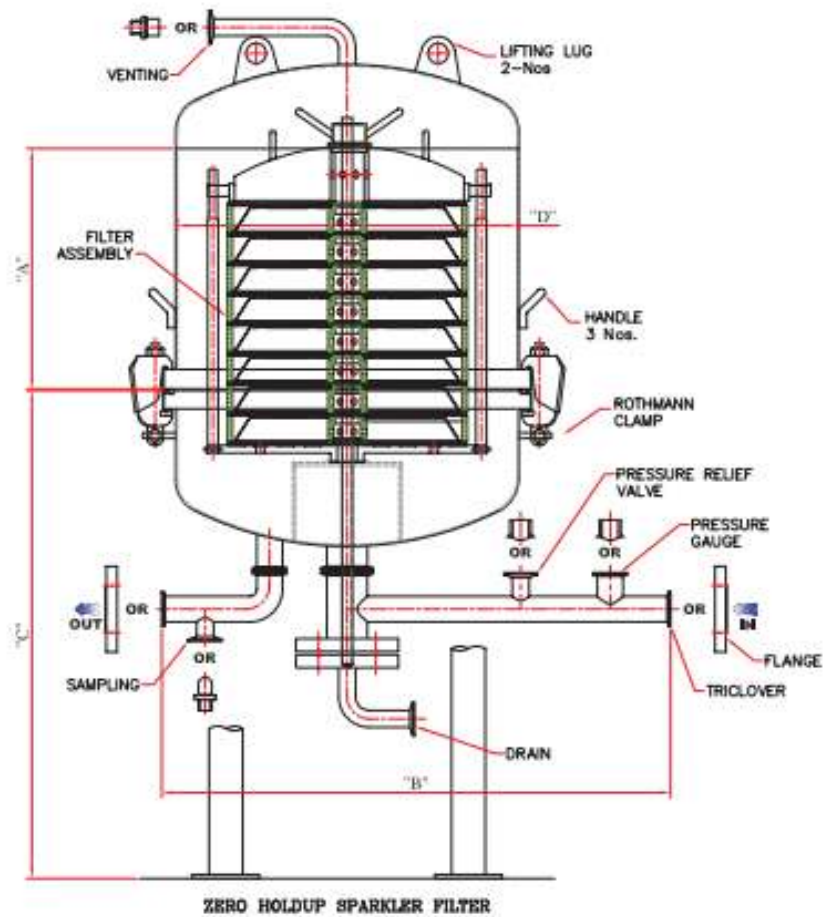
Durable standards

INDUSTRY APPLICATIONS

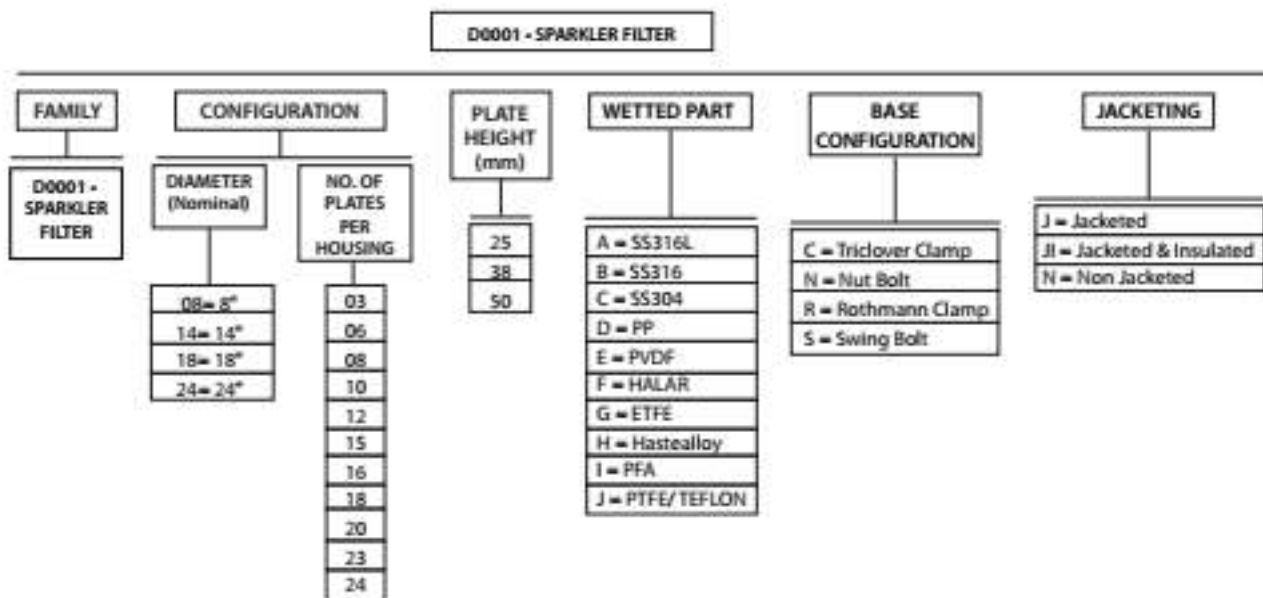
Sanitary pumps specifically used to transfer products like milk, fruit juice, ready to serve drinks, ice cream mix, Lassi, Butter Milk, Oils, emulsion, paints, fine chemicals, Essences, Flavors and many more.



SPARKLER FILTER PUMPS



We offer customized sparkler filter in combination with other filter equipments which include pre-stack assembly, bag filter, cartridge filter etc. as per design with option of zero hold up to offer complete solutions.



SPARKLER FILTER PUMPS

DESCRIPTION

SPARKLER FILTERS i.e. Horizontal Plate Microfiltration System also known as HPMSTM lter, redene ltration through compactness, ease of operation and robust engineering. This are ideally suited for filtration of syrup, liquid, chemicals, food & beverages etc. Sparkler filter equipment has been specially designed to accommodate filter sheets of variable nominal diameter 8", 14", 18", & 24" as per design with a surface area ranging from 0.1 - 10 m2.

Sparkler filters are totally enclosed, leak proof assembly. Sparkler filters, Filter cartridge assembly made of no. of disc type filter plates perforated filter screens, filter media, Inter locking cups with pump & piping, mounted on trolley. The swing bolt design ensures air tight sealing and also gives the operator the ability to quickly assemble and disassemble the filtration system. Jacketing option can be provided for heating or cooling the product. The zero hold up models ensures all the fluid is transferred to the filtrate side without any holdup. Sparkler filters features simplicity, efficiency, low maintenance & cost effective.

Diameter of sparkler filter in inch	Plate Ht in mm	No. of plate	Total Volume In Litre	Total Area In m2
8	25	10	5.8	0.254
8	38	10	9.2	0.254
14	25	15	30.4	1.321
14	38	10	31.7	0.881
14	50	10	42.3	0.881
18	25	12	41	1.782
18	38	15	80.2	2.228
18	50	10	71.3	1.485
24	25	10	60.7	2.641



ALL TYPE PUMP SPARES

We deal in the following brand of Pumps and Pump Spare Parts, Kirloskar,- KSB, Beacon, Weir, Mather Platt / Wilo, Johnson Other reputed brands.

We keep ready stock of pumps and pump spare parts like Impellers, Shaft, Bearing Housing etc

Spares can be supplied in various MOC like Bronze, Stainless Steel, Cast Iron etc

We supply pumps and spares to various industries like Steel, Mining, Chemical, Paper, Sugar, Hotels, Construction, Cement, Infrastructure etc

We provide complete pre-sales and after-sales service to our clients. We have a team of well-trained engineers and pump technicians who possess the technical knowhow and experience of pump installation and maintenance.

Our approach is to understand customer's requirements, devise solutions that meet those requirements economically and then deliver those solutions timely without compromising quality.

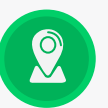
We request you to send us your enquiries and we assure to provide you the best prices and service.





ETANNOR ENGINEERS PVT. LTD.

**707, A Wing, Bldg 25,
Al Mecca Apt., R.S. Road
Pathanwadi, Malad East. Mumbai 400097**



+91 89831 33770



INFO@ETANNORENGINEERS.COM



WWW.ETANNORENGINEERS.COM

